

Technical Specifications

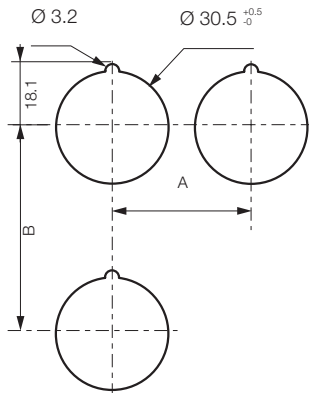
► GENERAL

Characteristics	Data	Standards
► Storage temperature for illuminated or non illuminated button	- 40°C to + 70°C	
► Operating temperature	Non illuminated buttons: - 25°C to + 70°C Illuminated buttons: - 25°C to + 60°C	
► Degree of protection	IP 65 for standard heads IP 67 for shrouded heads Type 4, 4X, 12, and 13	IEC 60947-1 NEMA standard
► Mechanical life	Spring return push button: 3 x 10 ⁶ operating cycles	IEC 60947-5-1

The contact blocks and LED modules used for the Ø 30mm heads are the same as for Ø 22mm heads. Their characteristics are described on pg. 105 to 108.

► Panel cut-out Ø 30mm

DRILLING



For heads equipped with electrical blocks with screw terminals

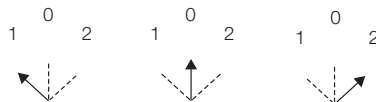
Minimum interval (mm)

A	> 40	For mushroom head Ø40
	> 50	For selector switch with Long handle
	> 70	For mushroom head Ø70
B	> 50	For double touch
	> 50	For legend plates
	> 70	For mushroom head Ø70

MECHANICAL OPERATION

For 3 position selector switches

Handle position
(view from front of panel)



Contacts block actuation
(clip position)



Non operated block

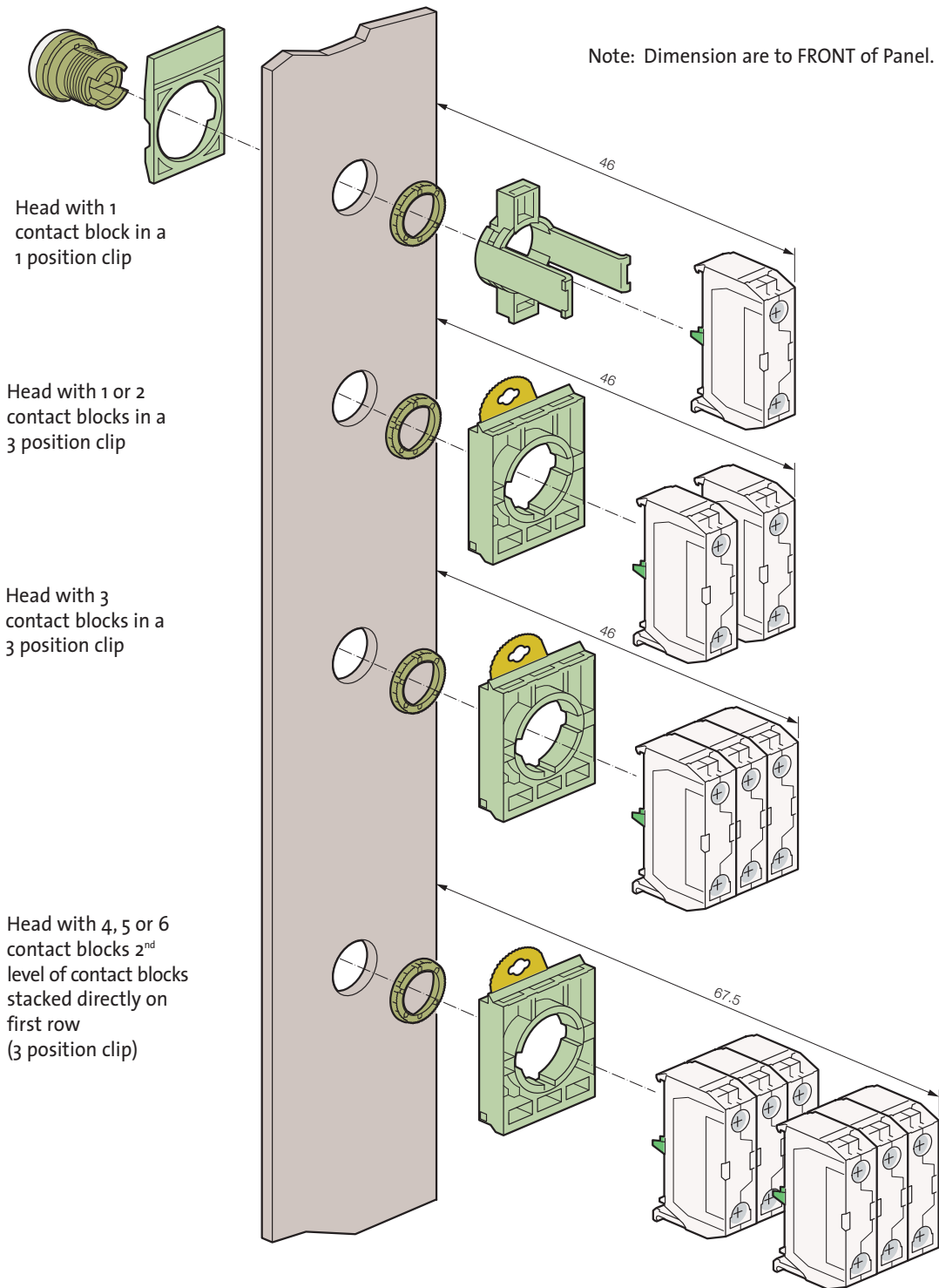


Operated block



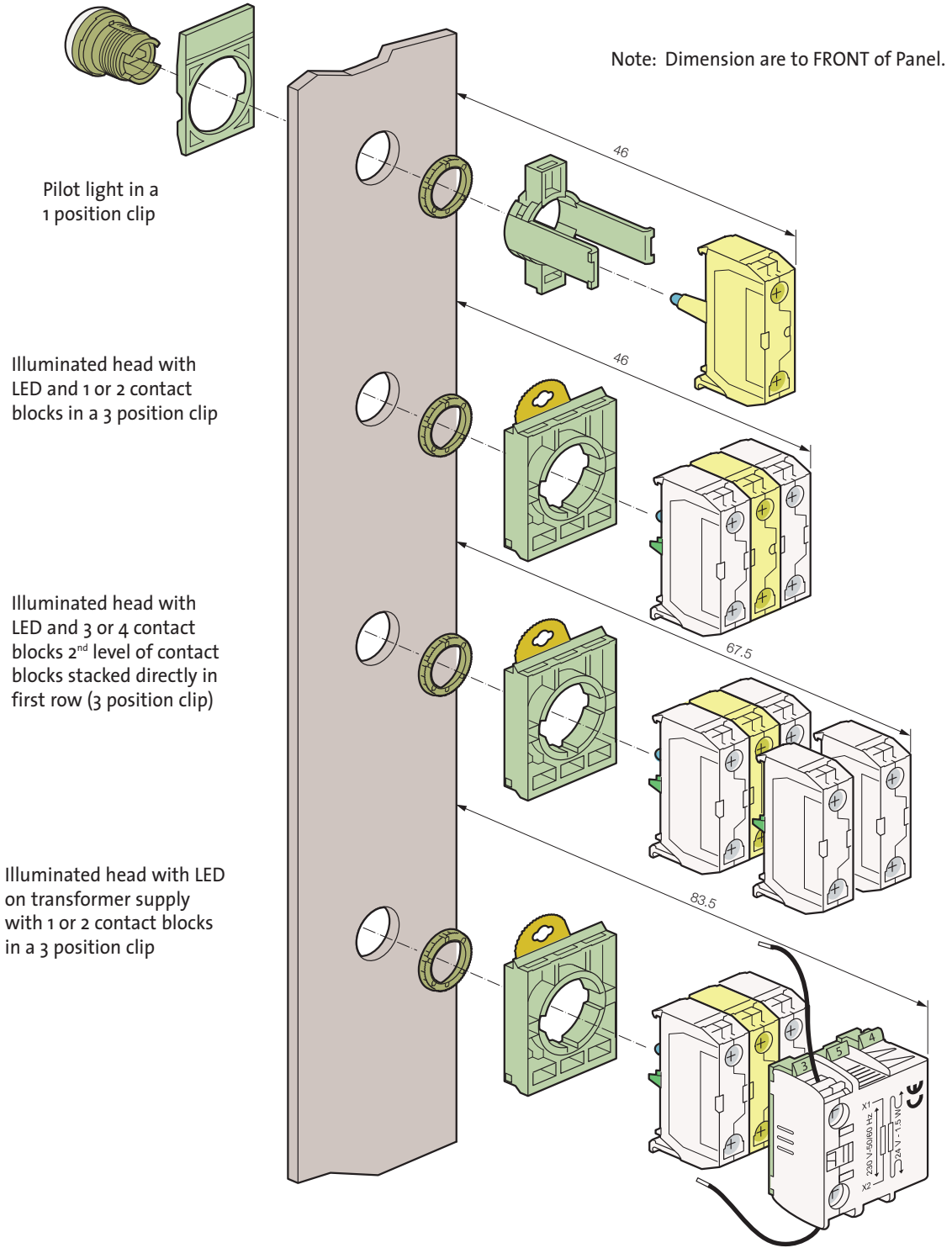
Technical Specifications


NON-ILLUMINATED



Technical Specifications

ILLUMINATED



 Illuminated blocks