

Non - Metallic Enclosures **30mm**
gray polycarbonate with pre-drilled holes

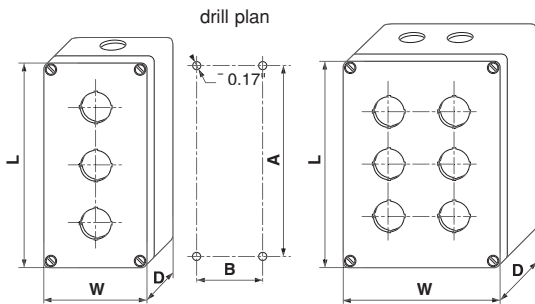
NEMA 4, 4x, 12, 13 / UL / CSA / CE



BPA303



BPP308



Number of Holes 1.2" Dia.	Reference of Enclosure	List Price	D depth ext.	depth useful	L	W	A	B
1	BPA 301	\$28.24	2.17	2.00	3.23	3.15	2.76	1.97
2	BPA 302	\$32.08	2.17	2.00	4.72	3.15	4.25	1.97
3	BPA 303	\$37.21	2.17	2.00	6.3	3.15	5.83	1.97
1	BPP 301	\$33.37	3.35	3.20	3.23	3.15	2.76	1.97
2	BPP 302	\$35.94	3.35	3.20	4.72	3.15	4.25	1.97
3	BPP 303	\$41.07	3.35	3.20	6.3	3.15	5.83	1.97
4	BPP 304	\$46.21	3.35	3.20	4.8	4.72	4.33	3.54
6	BPP 306	\$60.32	3.54	3.40	6.3	4.72	5.83	3.15
8	BPP 308	\$70.58	3.54	3.40	7.87	4.72	7.40	3.15
10	BPP 310	\$80.85	3.94	3.79	9.45	4.72	8.98	3.54

All dimensions given in inches

Specifications:

- Metal nameplate: Use only rectangular UE03, UE04, UE08 see page 5-107.
Enclosures with 1 or 2 holes - nameplates mount horizontally or vertically.
Enclosures with 3 thru 10 holes - nameplates mount horizontally only (with box in vertical position).
- Mounting bosses uses M3 mounting screws. Back plates available on special order only.
- Enclosures with 1 to 3 holes have on one side - one entry for cable gland: CM12P (PG13) for BPA series and CM14P (PG16) for BPP series.
- Enclosures with 4 to 10 holes have on one side - two entries for cable gland: CM14P (PG16).
- Blanking plugs for entrance holes -part# WA0215 see page 3-56

Cable Glands



CM12P

Part Number	Size	Cable Diameter	Mounting Hole Diameter	List Price
CM10P	PG11	0.28-0.39"	3/4"	\$2.66
CM12P	PG13	0.35-0.47"	13/16"	\$3.34
CM14P	PG16	0.39-0.55"	7/8"	\$4.10
CM18P	PG21	0.55-0.71"	1-1/8"	\$6.08
CM24P	PG29	0.71-0.99"	1-1/2"	\$7.10

Notes:

- 1) **Control Stations** may be ordered assembled for a **\$1.00 per hole list price assembly fee.**
- 2) **General Ordering Information:** see page **I** for details.

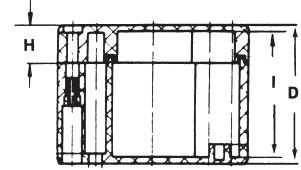
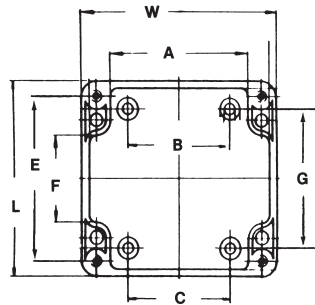
Non - Metallic Enclosures
gray polycarbonate without holes



BNT208



BNT251



Polycarbonate Enclosures Part Number	LENGTH	WIDTH	DEPTH	A	B	C	E	F	G	H	DEPTH	WEIGHT OZ.	LIST PRICE
	L OUTSIDE	W OUTSIDE	D OUTSIDE								I INSIDE		
BNT206	2.56	1.97	1.38	1.13	*	*	*	1.72	*	.39	1.20	1.20	\$17.47
BNT210	3.23	3.15	2.17	1.97	2.28	1.97	2.76	2.25	1.71	.59	1.89	3.90	\$21.75
BNT225	3.23	3.15	3.35	1.97	1.71	1.97	2.76	2.25	1.71	.59	3.11	5.30	\$27.60
BNT208	3.86	2.52	1.42	1.26	*	*	*	2.91	*	.39	1.08	4.20	\$21.75
BNT215	4.72	3.15	2.17	1.46	2.28	1.97	4.25	3.75	3.21	.59	1.91	5.10	\$24.76
BNT226	4.72	3.15	3.35	1.46	2.28	1.97	4.27	3.75	3.21	.59	3.15	6.70	\$27.80
BNT217	4.80	4.72	2.17	3.04	3.86	3.54	4.33	3.75	3.28	.59	1.97	8.10	\$31.57
BNT227	4.80	4.72	3.35	3.04	3.86	3.54	4.33	3.75	3.28	.59	3.11	12.30	\$37.96
BNT220	6.30	3.15	2.17	1.46	2.28	3.54	5.83	5.32	4.78	.59	1.91	6.70	\$33.36
BNT231	6.30	3.15	3.35	1.46	2.28	3.54	5.83	5.32	4.78	.59	3.15	8.80	\$32.20
BNT238	6.30	4.72	3.54	2.96	3.46	*	*	5.32	4.74	1.18	3.31	13.70	\$74.57
BNT246	6.30	4.72	5.52	2.96	3.46	*	*	5.32	4.74	1.18	3.31	19.70	\$56.43
BNT237	7.87	4.72	2.95	2.96	3.56	*	*	6.90	6.33	1.18	3.31	15.80	\$47.10
BNT223	7.87	5.91	2.95	4.17	*	4.69	7.40	6.89	*	.59	2.72	18.70	\$50.35
BNT242	9.45	4.72	3.94	2.99	3.88	3.54	8.50	8.50	*	.98	3.70	17.90	\$49.68
BNT240	9.84	6.30	3.54	4.57	5.04	5.08	9.37	8.86	*	.59	3.31	19.70	\$55.21
BNT243	9.45	6.30	4.72	4.66	5.45	5.14	8.98	8.56	7.94	1.77	4.49	25.70	\$69.06
BNT250	9.84	6.30	5.91	4.57	5.04	5.08	9.37	8.86	*	2.95	5.67	24.60	\$91.31
BNT253	11.81	9.06	3.35	7.36	*	7.87	11.34	10.83	10.04	1.18	3.11	33.50	\$71.09
BNT254	11.81	9.06	4.33	7.36	*	7.87	11.34	10.83	10.04	2.17	4.09	41.20	\$82.98
BNT244	13.39	5.91	3.94	3.50	4.41	4.33	12.76	11.97	8.67	.79	3.66	35.60	\$96.87
BNT245	13.39	5.91	4.72	3.50	4.41	4.33	12.76	11.97	8.67	1.57	4.45	38.70	\$116.14
BNT251	14.17	6.30	3.93	4.53	5.12	5.04	13.70	13.19	12.44	.98	3.70	24.60	\$108.96
BNT255	14.17	7.87	5.91	5.75	6.77	6.14	13.39	12.60	11.85	1.97	5.63	52.80	\$116.22