

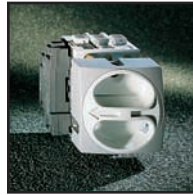
Disconnect Switches
standard versions - gray

50A to 63A

IP40 in standard version IP65 on request***

UL / CSA / CE

door/panel mounted switches including handle



Front mount padlockable handle
0174211



Front mount non-padlockable handle
0174222

		Part #	List Price	Part #	List Price
50A	3 Pole	0174201	\$ 42.08	0174202	\$ 44.82
	3 Pole + NC/NO	0174211	50.40	0174212	53.14
	4 Pole Neutral L*	0174221	55.91	0174222	58.65
	4 Pole Neutral L + NC/NO*	0174231	64.23	0174232	66.97
63A	3 Pole	0174301	54.80	0174302	57.54
	3 Pole + NC/NO	0174311	63.12	0174312	65.86
	4 Pole Neutral L*	0174321	71.34	0174322	74.08
	4 Pole Neutral L + NC/NO*	0174331	79.66	0174332	82.40

base & din-rail mounted switches modular and door interlock versions including handle and shaft



Rear Mounting Plate
0172387
List Price: \$1.78



Modular (in-panel) presentation
0174225



Metal short shaft Extension 0168209SS**
Min. 5.31" Max. 10.24"



Metal long shaft Extension 0168209LS**
Min. 5.31" Max. 16.14"

		Part #	List Price	Part #	List Price	Part #	List Price
50A	3 Pole	0174205	\$ 42.08	0168209SS	\$ 51.97	0168209LS	\$ 54.22
	3 Pole + NC/NO	0174215	50.40	0168219SS	60.29	0168219LS	62.54
	4 Pole neutral L*	0174225	55.91	0168229SS	65.80	0168229LS	68.05
	4 Pole neutral L + NC/NO*	0174235	64.23	0168239SS	74.12	0168239LS	76.37
63A	3 Pole	0174305	54.80	0168309SS	64.69	0168309LS	66.94
	3 Pole + NC/NO	0174315	63.12	0168319SS	73.01	0168319LS	75.26
	4 Pole neutral L*	0174325	71.34	0168329SS	81.23	0168329LS	83.48
	4 Pole neutral L + NC/NO*	0174335	79.66	0168339SS	89.55	0168339LS	91.80

*4th Pole is Late Break Neutral

**Standard version for Din Rail Mounting. Order Rear Mounting Plate separately when required. Part number 0172387, list price \$1.78.

***Switches are available with IP65 protection by adding the suffix -1 to the part number, example 0174001-1, add \$2.70 to the IP40 version list price.

Components and Accessories for 50A and 63A Switches



Auxiliary contact NC/NO
0172179



3 pole body without handle
0172300

		Part #	List Price
IP65 Seal Kit for door / panel mount switches	50A/63A	0172267	\$ 2.70
IP65 Seal Kit for door interlock switches	50A/63A	0174259	2.70
3 pole body without handle	50A	0172200	38.91
Additional Pole	50A	0172275	15.57
Late Break Neutral pole	50A	0172265	13.83
Terminal (junction) block	50A/63A	0172385	18.42
3 pole body without handle	63A	0172300	51.63
Additional Pole	63A	0172375	18.28
Late Break Neutral pole	63A	0172365	16.54
Auxiliary contact NC/NO	10A	0172179	8.32
1 pole early break auxiliary contact	5A	0172395	11.86
2 pole early break auxiliary contact	5A	0174395	21.93
1 pole early make auxiliary contact	5A	0172397	13.13